



Center for Learning and Improving
Performance

Providing relevant and innovative learning and developmental resources that support New Jersey's public sector employees and promote organizational effectiveness.

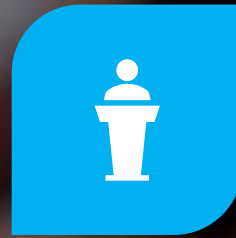
CLIP Services



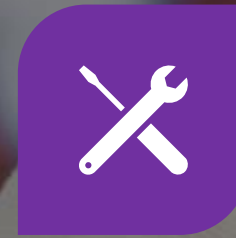
LEARNING
MANAGEMENT
SYSTEM



WEB-BASED
TRAINING



INSTRUCTOR
LED COURSES



CUSTOM
PROGRAMS



RESOURCES



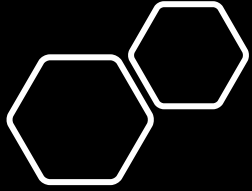
Learning Management System

- Hub for all things learning
- Provides access to all of CLIP's eLearning courses
- Registration
- Transcripts

A woman with long dark hair, wearing a blue headset and a light blue button-down shirt, is smiling and looking at a laptop screen. She is holding a black pen in her right hand. The background is a blurred indoor setting with warm lighting.

CLIP All Access Pass

- Open Sesame catalog
- Learning paths
- Audio books and summaries
- Curated content



Diversity, Equity & Inclusion



- Respectful Workplace
- ADA
- Generational
- Bias
- Bystander
- Cultural Intelligence
- Diverse Teams
- Workplace Bullying
- Advocate
- Age Discrimination
- Valuing Differences
- Building an Inclusive Workforce
- Gender and Gender Identity



Learning Paths

- Diversity, Equity, and Inclusion for Employees
- Diversity, Equity, and Inclusion for Leaders
- LGBTQIA+ Inclusion in the Workplace for Employees
- LGBTQIA+ Inclusion in the Workplace for Managers

A photograph of three business professionals (two women and one man) smiling and looking at the camera. They are sitting at a table with documents, a pie chart, and a pen. The background is a blurred office setting.

Instructor Led Courses

Traditional

- Regional Locations

Virtual

- ZOOM

Americans With Disabilities Act

Equal Employment
Opportunities (EEO) Law and
Administrative Investigations
Certificate Program

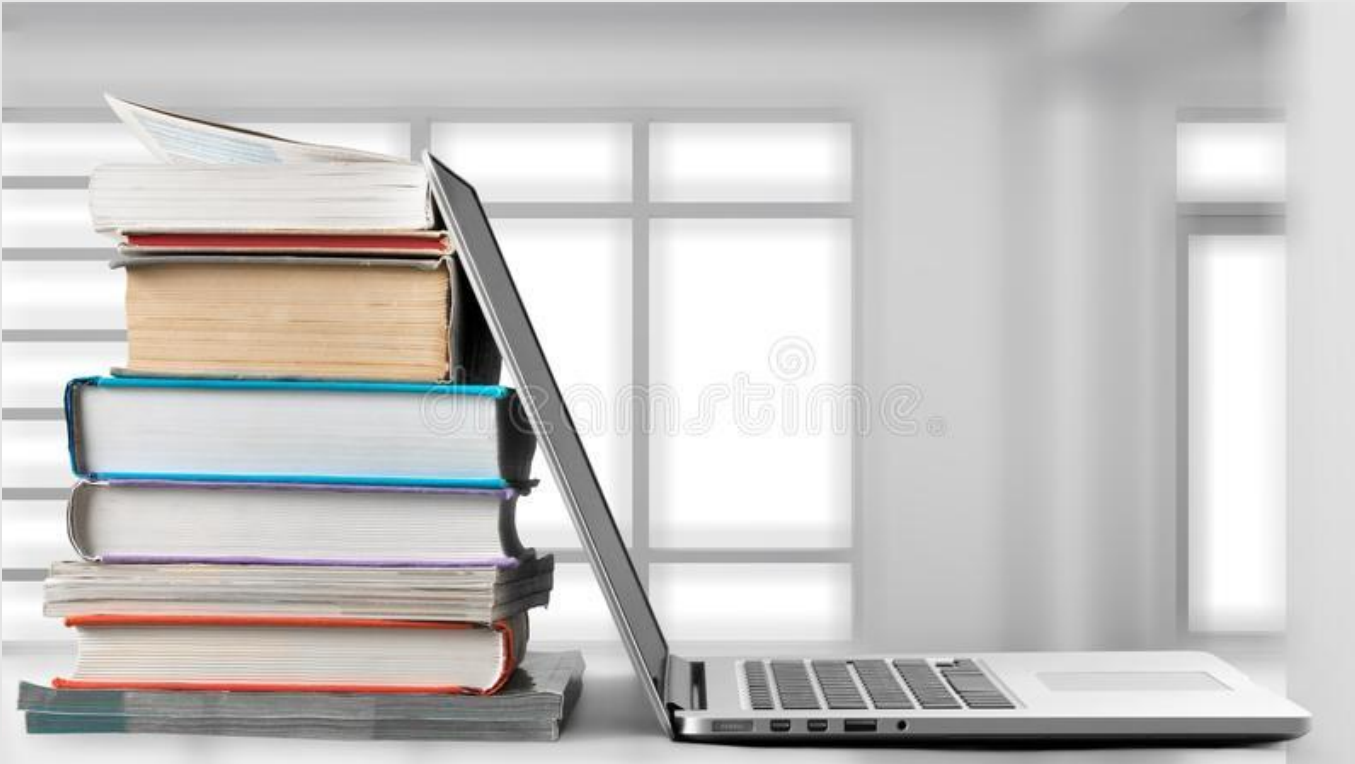
Leading the Conscious
Workforce

The Conscious Workforce

Workplace Diversity and
Inclusion



Custom Training



- eLearning
- Video
- Instructor led
- Engagements
- Assessments
- Scorm package

Resources

Training guides

Training post

CLIP email distribution list

Training needs analysis





Questions

- Customer Success Team
- CLIPtraining.support@csc.nj.gov
- (609) 777-2225